

## 愛知工業大学サーバーにおける英語教育資料および文献

# English Educational Web Sites at [www.aitech.ac.jp](http://www.aitech.ac.jp)

By Charles I. Kelly and Lawrence E. Kelly

Abstract: Aichi Institute of Technology's web server <[www.aitech.ac.jp](http://www.aitech.ac.jp)> hosts two web sites for students studying English and one internationally well-known web site for English teachers. This paper presents these sites.

### Introduction

Web-literate English as a Second Language (ESL) students and teachers around the world are well aware of the [www.aitech.ac.jp](http://www.aitech.ac.jp) URL. This is due to the popularity of *The Internet TESL Journal* and its associated *Activities for ESL Students* and Charles Kelly and Lawrence Kelly's *Interesting Things for ESL Students*. This paper presents some of the main sections of these sites with a sample screen shot of the web pages with explanations.

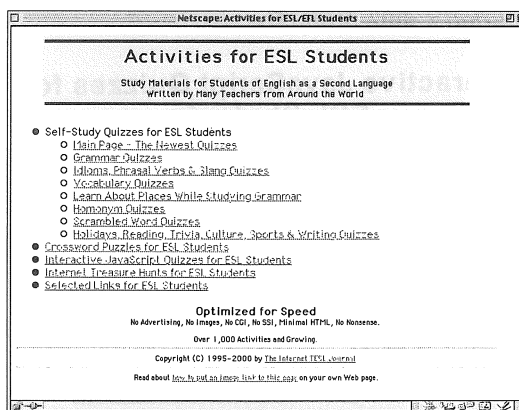
### A Brief History

*The Internet TESL Journal* <[www.aitech.ac.jp/~iteslj/](http://www.aitech.ac.jp/~iteslj/)> was started in 1995 by Charles Kelly and Lawrence Kelly and was the first English language educational site to be hosted on the Aichi Institute of Technology server. It was created to provide a web-based journal for ESL teachers. With the help and support of teachers from around the world, it has grown to be one of the most highly accessed ESL web sites in the world.

*Activities for ESL Students* <[www.aitech.ac.jp/~iteslj/s/](http://www.aitech.ac.jp/~iteslj/s/)> started in 1996 as part of *The Internet TESL Journal* to include quizzes, crossword puzzles, treasure hunts and other activities for students written by many teachers from around the world.

*Interesting Things for ESL Students* <<http://www.aitech.ac.jp/~iteslj/>> was started in 1997 by Charles Kelly and Lawrence Kelly to provide students with puzzles, quizzes, activities and study materials. This site was created in order to do projects that would be too time-consuming and difficult to allow outside submissions.

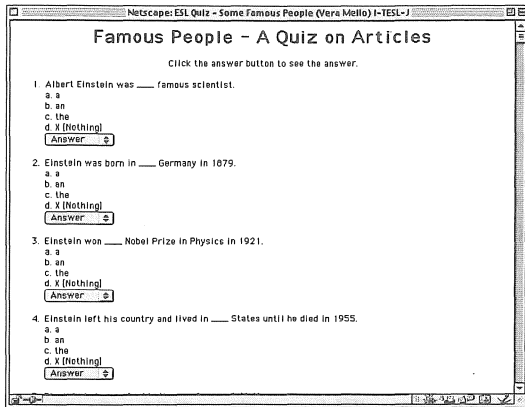
## Activities for ESL Students



<http://www.aitech.ac.jp/~iteslj/s/>

This is the main page which links to all of the student-oriented pages on *The Internet TESL Journal's* web site.

### Self-Study Quizzes for ESL Students

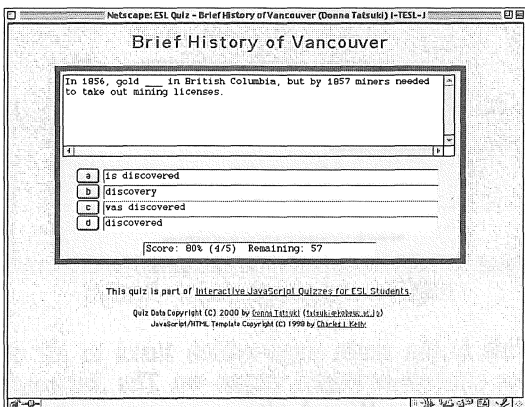


<http://www.aitech.ac.jp/~iteslj/quizzes/>

This is a collection of quizzes that can be used by students on the web or can be printed out by teachers and used in the ESL classroom. An answer button under each question allows students to instantly see the correct answer.

There are over 700 quizzes sorted by level and by category such as vocabulary, grammar, idioms, reading comprehension and so on. Regular visitors can easily find the constant-stream of newly-submitted quizzes near the top of the main page. These quizzes were written by many teachers from around the world who have donated their quizzes to *The Internet TESL Journal's* quiz project.

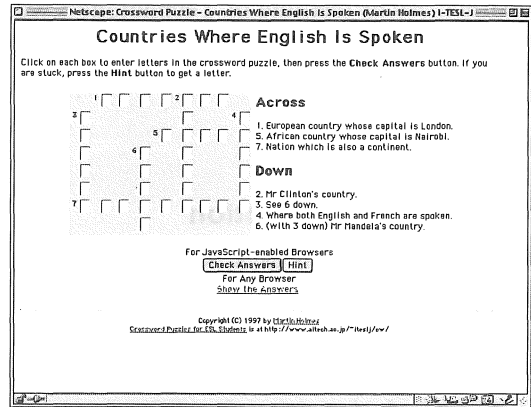
### Interactive JavaScript Quizzes for ESL Students



<http://www.aitech.ac.jp/~iteslj/quizzes/js/>

This collection of JavaScript quizzes is a more recent addition to *The Internet TESL Journal's Activities for ESL Students*. It has been online since 1998, and currently has over 100 quizzes.

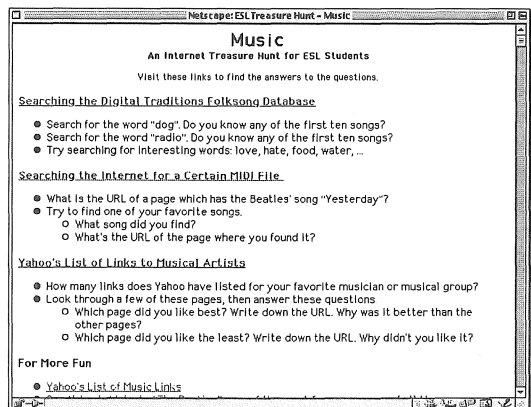
### Crossword Puzzles for ESL Students



<http://www.aitech.ac.jp/~iteslj/cw/>

This is a growing collection of over 50 crossword puzzles that are designed to be used on the web by ESL students. The puzzles are sorted by level (easy, medium or difficult) and by the number of words included in each puzzle (between seven to 26 words). There is a hint button to help students who are having difficulty with a puzzle.

### Treasure Hunts for ESL Students

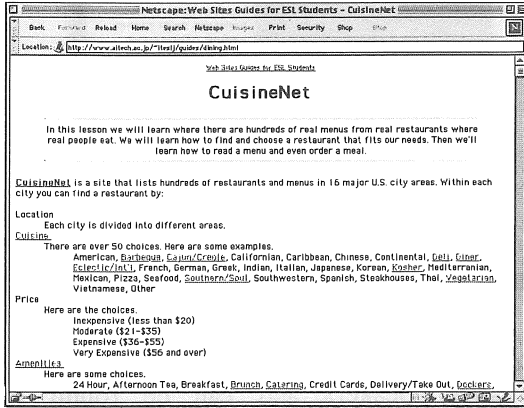


<http://www.aitech.ac.jp/~iteslj/th/>

These scavenger hunts direct students to various web sites where they are required to

find information. The sites have been specially selected for ESL students.

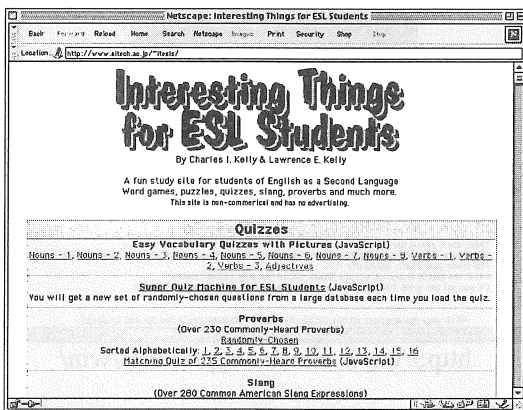
### Web Sites Guides for ESL Students



<http://www.aitech.ac.jp/~iteslj/guides/>

These pages introduce ESL students to web sites designed for native English speakers. Vocabulary lists and activities are included.

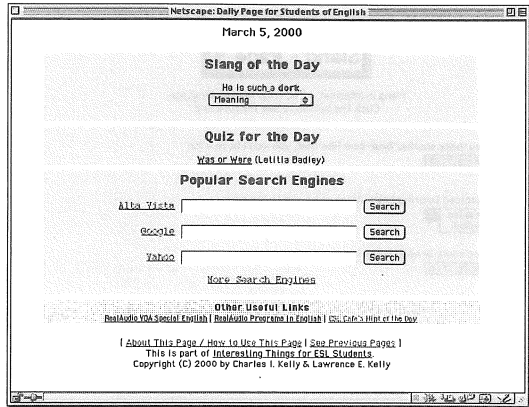
### Interesting Things for ESL Students



<http://www.aitech.ac.jp/~iteslj/>

This site was started in 1997 to help ESL students study English on the web. It includes quizzes, slang, proverbs and more.

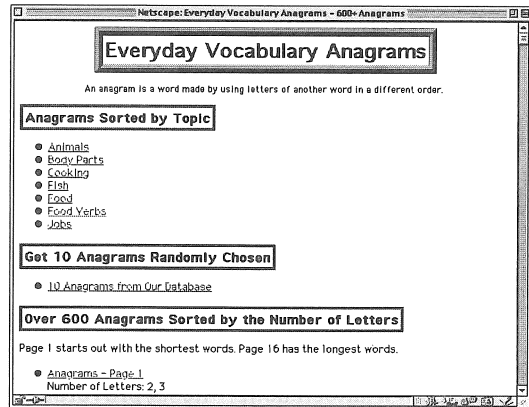
### Daily Page for Students of English



<http://www.aitech.ac.jp/~iteslj/daily/>

This page changes every day and is set up for students to use as a "home page" or a "startup page" with their web browsers. In addition to things such as *Proverb of the Day*, *Slang of the Day*, *Quiz of the Day*, this page includes three popular search engines, so it makes an ideal page to use as a "startup page."

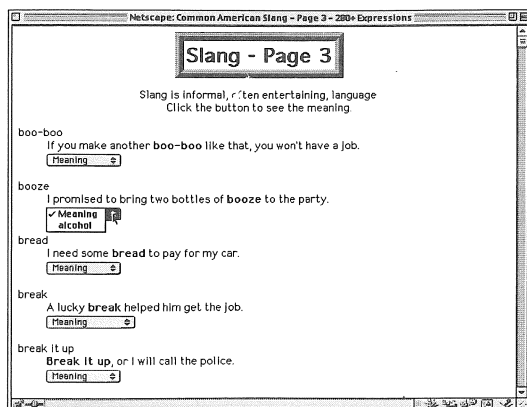
### Everyday Vocabulary Anagrams



<http://www.aitech.ac.jp/~iteslj/anagrams/>

An anagram is a word made by using letters of another word in a different order. The vocabulary has been limited to everyday vocabulary to allow ESL students to also enjoy doing these puzzles. There are over 600 anagrams which can be studied by topic, by number of letters or in a randomly selected order.

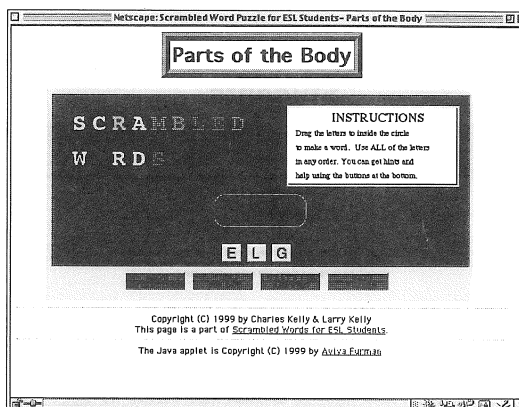
## Common American Slang



<http://www.aitech.ac.jp/~itesls/slang/>

Students of English are often interested in slang. The slang in this collection is limited to commonly heard slang expressions making it a very useful list for ESL students.

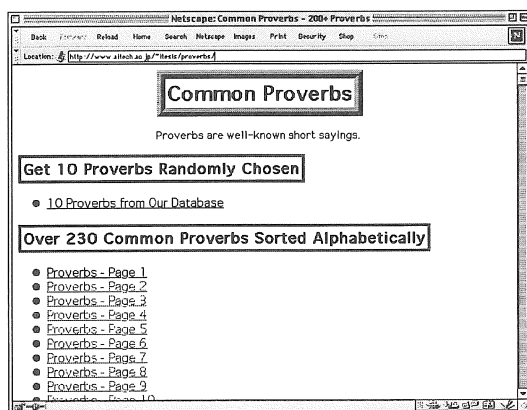
## Scrambled Words



<http://www.aitech.ac.jp/~itesls/sw/>

Scrambled word puzzles are popular among English speakers and can be found in newspapers and magazines. However, puzzles for native English speakers use vocabulary that is not known and not very useful to ESL students. These puzzles contain carefully selected vocabulary that students know or should know.

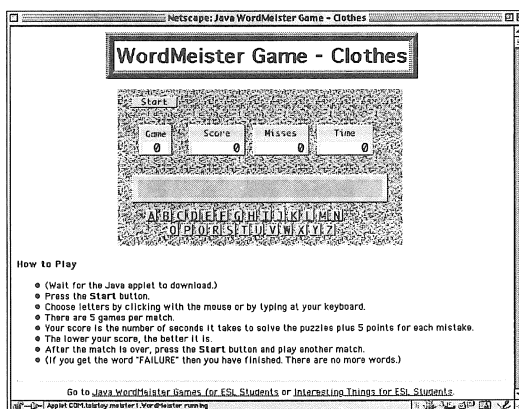
## Common Proverbs



<http://www.aitech.ac.jp/~itesls/proverbs/>

Proverbs are a good way to study culture and occur frequently in everyday conversation and reading. This page helps student learn the most commonly used English proverbs. Students may study proverbs in alphabetical order or in random order. Some students may prefer to study in alphabetical order one time through and then use the random selection as a review.

## WordMeister Game for ESL Students

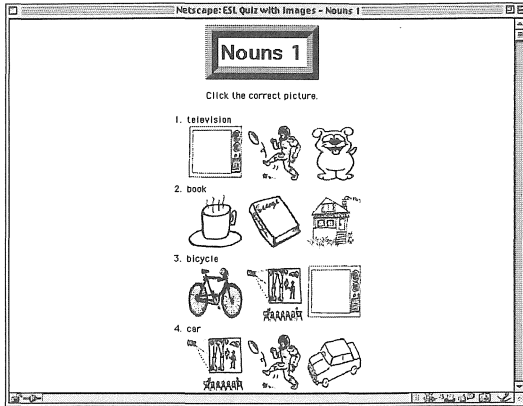


<http://www.aitech.ac.jp/~itesls/wm/>

This is a game similar to hangman that requires a little more skill since the player is under pressure from a constantly running clock. Since this game uses Java it is much more similar to video games that students are accustomed to playing.



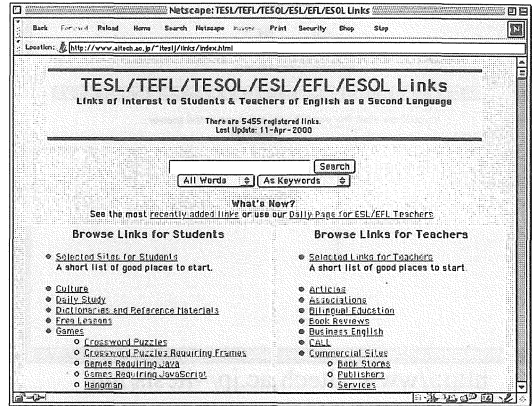
## Easy Vocabulary Quizzes with Pictures



<http://www.aitech.ac.jp/~iteslv/q/>

These interactive JavaScript quizzes cover easy vocabulary and are good for beginners and children.

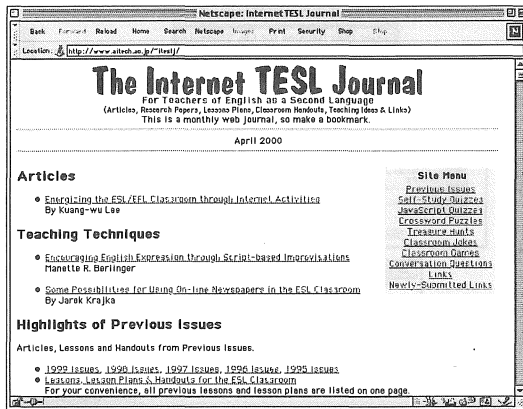
## TESL/TEFL/TESOL/ESL/EFL/ESOL Links



<http://www.aitech.ac.jp/~iteslj/links/>

This is the largest and best-maintained directory of ESL links on the web. The over 5,000 links can be browsed by category or searched using the search engine. This is the central site where the ESL web community registers sites. Submitted links appear immediately on the *What's New* page and are only added to the main database after being checked. This helps to maintain the usefulness of this link directory.

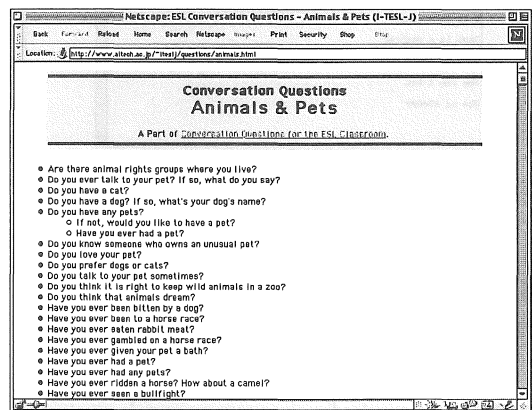
## The Internet TESL Journal



<http://www.aitech.ac.jp/~iteslj/>

*The Internet TESL Journal's* is a monthly journal with research papers, articles on teaching techniques, lessons, lesson plans, book reviews, handouts and other classroom materials. All previously published articles remain online and are easily accessible.

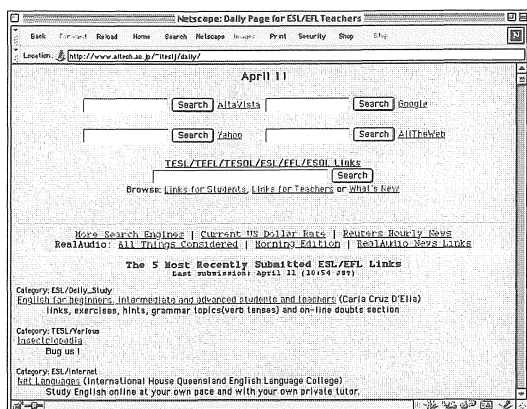
## Conversation Questions for the ESL Classroom



<http://www.aitech.ac.jp/~iteslj/questions/>

Over 700 question on 25 topics can be found here. There is a page for teachers explaining how to use these questions in the classroom.

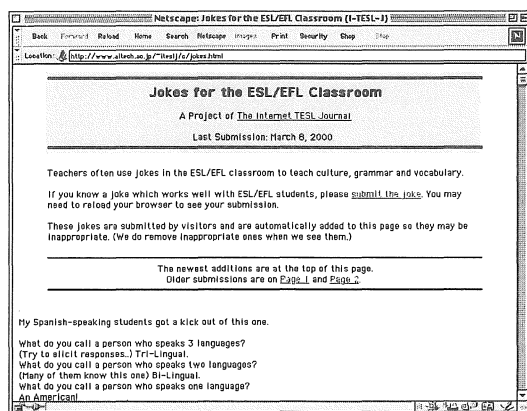
## Daily Page for ESL/EFL Teachers



<http://www.aitech.ac.jp/~iteslj/daily/>

This page is a start up “home page” for teachers. It includes four popular search engines. It also includes the search engine for *TESL/TEFL/TESOL/ESL/EFL/ESOL Links* and its five most recently submitted links.

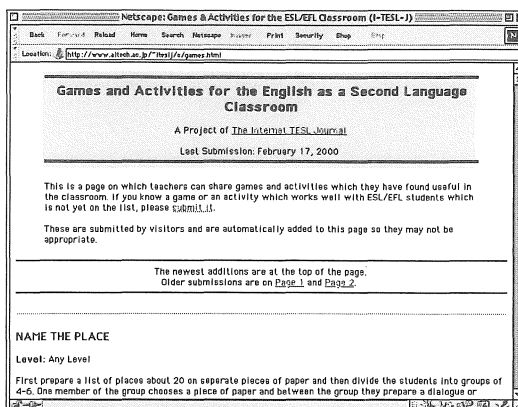
## Jokes for the ESL/EFL Classroom



<http://www.aitech.ac.jp/~iteslj/c/jokes.html>

There are currently over 250 jokes here that teachers have found useful in the ESL classroom. Jokes can be used to teach culture, grammar, vocabulary and spelling. Students and teachers have submitted these jokes.

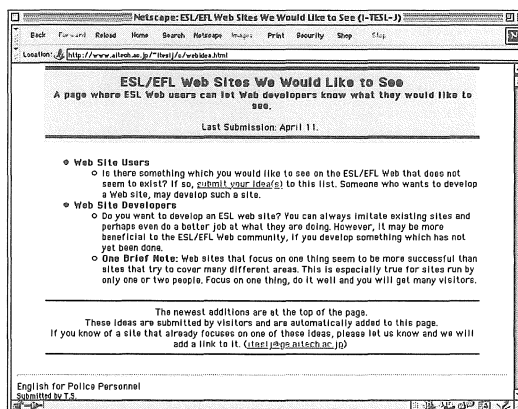
## Games and Activities for the ESL Classroom



<http://www.aitech.ac.jp/~iteslj/c/games.html>

Games to use in the ESL classroom are here. Teachers have submitted games and activities that they have found useful in the classroom.

## ESL/EFL Web Sites We Would Like to See



<http://www.aitech.ac.jp/~iteslj/c/webidea.html>

### Note

This article is online with clickable links at: <http://www.aitech.ac.jp/~iteslj/kiyo2000/>

(受理 平成12年3月18日)